

# Illustrator CC with Pitman Training

Adobe Illustrator is a common programme used by Graphic Designers and artists to create vector images. Our Illustrator CC training course will help you learn the features and functions of this latest Creative Cloud, CC, version of the software.

This Illustrator CC course is online, so you can fit your studies flexibly around your existing commitments. Through three main sessions in the course you'll learn things such as Design Principles, Vector Drawing Tools, Layers and Masks and 3D Tools to name just a few topics.

To find out more about our Adobe Creative Cloud training, speak to a Course Advisor at any of our local centres.

## Designed for

The Illustrator CC course is for anyone who is looking to work as a Graphic Designer, Artist, Web Designer or Web Developer and is suitable for those at beginner level.

## Objectives

This Illustrator course is designed to teach you the ins and outs of the new Illustrator CC software so that you can confidently create illustrations, logos, charts and more.

## Course Content

### Session 1:

- Section A: Design Principles
- Section B: Digital Art Technology
- Section C: Document and Interface
- Section D: Tools, Swatches and Colour Panels

### Session 2:

- Section A: Vector Drawing Tools
- Section B: Symbols
- Section C: Layers and Masks
- Section D: Import and Export

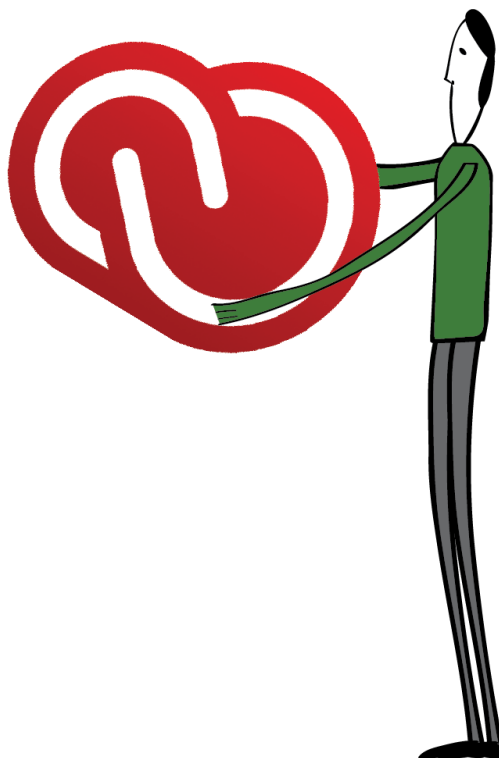
### Session 3:

- Section A: Shapes and Symbols
- Section B: Charts and Graphs
- Section C: Text
- Section D: 3D Tools

## Benefits

- The flexibility and value of a self-study course designed to enable you to work at your own pace
- The opportunity to gain the widely recognised Pitman Training Certificate

Course duration: 30 hours



The CPD Standards Office  
CPD PROVIDER: 21121  
2014 - 2016  
[www.cpdstandards.com](http://www.cpdstandards.com)



Make sure this course is right for you - have a friendly chat with a Course Adviser, arrange to drop in to have a FREE taster or book a place...

City of London: 020 7256 6668 Oxford Circus: 020 7580 1651  
web: [www.pitmanlondon.co.uk](http://www.pitmanlondon.co.uk) email: [courses@pitmanlondon.co.uk](mailto:courses@pitmanlondon.co.uk)



- ▶ Microsoft Skills
- ▶ MOS & ECDL
- ▶ Sage
- ▶ IT Professional
- ▶ Keyboard Skills
- ▶ Management Skills
- ▶ Secretarial & PA
- ▶ Administration
- ▶ Personal Development
- ▶ Shorthand
- ▶ Bookkeeping & Accounts